

# HUMPHREYS CONCERTS

by the bay

## VENUE

2241 Shelter Island Drive, San Diego, CA 92106  
www.humphreysconcerts.com  
Capacity: 1460 reserved seating / 1428 General Admission  
Humphreys is an outdoor venue

## VICE PRESIDENT

Bobbi Brieske  
619-224-1556  
Fax: 619-814-1427  
[bbrieske@bartellhotels.com](mailto:bbrieske@bartellhotels.com)

## PRODUCTION MANAGER/SETTLEMENT

Tim Mercer  
Mobile: 619-991-9220  
[timmercer@cox.net](mailto:timmercer@cox.net)

## PUBLICITY/TICKETING

Mitzi Stone  
619-226-4033  
Fax: 619-814-1427  
[mitzi@humphreysconcerts.com](mailto:mitzi@humphreysconcerts.com)

## STAGE

The stage is a fixed structure 48 ft wide x 24 ft deep x 5 feet high. The roof height is 16 ft 6 inches from floor of stage. Size cannot be modified.  
Corporate and radio station signage appears on speaker stacks.

## IMPORTANT INFORMATION

Curfew: 10:30pm strictly enforced  
Comps: Bands have a maximum of 16 tickets per evening.  
Sound: NO AMPLIFIED SOUND IN VENUE PRIOR TO 4:00PM.  
Mix position permanent rear-of-house deck.  
House sound and PA system (see attached specs)  
Sound Restrictions: 96db at the mix, C weighting,

Directions: Interstate 5 (South) to Rosecrans exit. Follow Rosecrans (heading West) to Shelter Island Drive (a bout 5 miles). Left on Shelter Island Drive. Humphreys Half Moon Inn & Suites on right side. Park in lot between Humphreys Half Moon Inn and Humphreys Restaurant.

## SOUND COMPANY

Sound Image  
760-737-3900  
Fax: 760-737-3929

## LIGHTING COMPANY

San Diego Events Pros  
Don Brennan 619-279-6974

## CATERING

Catering is in-house as per advance

## CREW CALL

As per advance

## MERCHANDISING

20% commission to Humphreys when sold by band provided seller.  
25% commission to Humphreys when sold by Humphreys seller.  
Humphreys merchandise on sale in venue.  
Merchandise contact Tom Essa at Humphreys Restaurant, Direct 619-398-9446, Cell 619-261-8417.  
[tessa@humphreysrestaurant.com](mailto:tessa@humphreysrestaurant.com)

## BUS PARKING

Two designated bus parking spaces in hotel parking lot with shore power.

## DRESSING ROOMS

Two hotel rooms are available for artist's day use, inclusive of production office.

## HOTEL ROOMS

Contact the hotels directly to make room reservations. No rooms are held for performers without advance reservations.

### On-Site

Humphreys Half Moon Inn & Suites  
Contact Melissa Garibay at 619-224-3411 ([mgaribay@halfmooninn.com](mailto:mgaribay@halfmooninn.com))  
Special reduced concert performer rates are \$179 Sunday-Thursday and \$189 Friday-Saturday or best available rate, whichever is lower - single/double, non-commissionable, based on availability.

### Nearby

Best Western Island Palms Hotel & Marina  
2051 Shelter Island Drive, San Diego  
619-222-0561

Holiday Inn Bayside  
4875 No. Harbor Drive, San Diego  
619-224-3621

## TAXES

Artist subject to 7% California withholding taxes.

## HUMPHREYS 2021 AUDIO EQUIPMENT LIST

### FOH

Console: 1 – AVID SC-48 (32 outputs if used for Monitors)  
Consoles can be swapped to other end of snake

Processing: 1 – FOH Effects rack containing:  
1 – Yamaha SPX 2000  
2 – Yamaha SPX 90  
1 – TC Electronic D2 Delay  
4- DBX 160A  
2- DBX 1046 Quad Comp/Limiter  
2- DBX 1074 Quad Gates  
1 – Marantz CDR

Drive System:  
2- BSS FDS366  
2 – Klark Teknik DN 360 EQ

### MAINS

6 – Sound Image Phase Loc Series II 3 Way High Boxes  
2 – 15” Loudspeakers,  
1 – 2” Driver,  
2 – High compression tweeters  
4 – Sound Image Series II Low Boxes  
2 – 18” Loudspeakers  
2 – Sound Image 1160’s (Front Fills)  
2 – Sound Image AR 100 series Amp Racks  
All QSC powered Operating @ 4 Ohms

### MONITORS

Console: 1 – Yamaha PM-5D-RH (24 outputs if used for Monitors)  
Consoles can be swapped to other end of snake

Wedges: 12 – Sound Image 1 x 12” Bi amped floor monitors with 2” driver  
2 – Sound Image 2 x 15” Bi amped floor monitors with 2” driver  
2 – Sound Image Side fill enclosures each containing:  
2 – 15” Loudspeakers  
1 – 2” Driver

Amplifiers: 12 – Mixes of power, each containing:  
QSC 1400 & 1700 amps (1000 watts per Mix)

### Microphones & DI’s:

1 – Sennheiser 441	5- Shure SM-81
2 – Sennheiser 421’s	1- Shure Beta 52
8 – Shure Beta 58’s	4- Sennheiser 604
10 - Shure SM-57’s	2- Audix CX-111
8 – Shure SM-58’s	1- Shure Beta 91
10 – Passive DI’s	4-Active DI’s
3 – Shure Beta 98 clip on condenser mics	

### DISTRO

1 – Complete power Distro with 6 – 20 amp quad boxes for band power

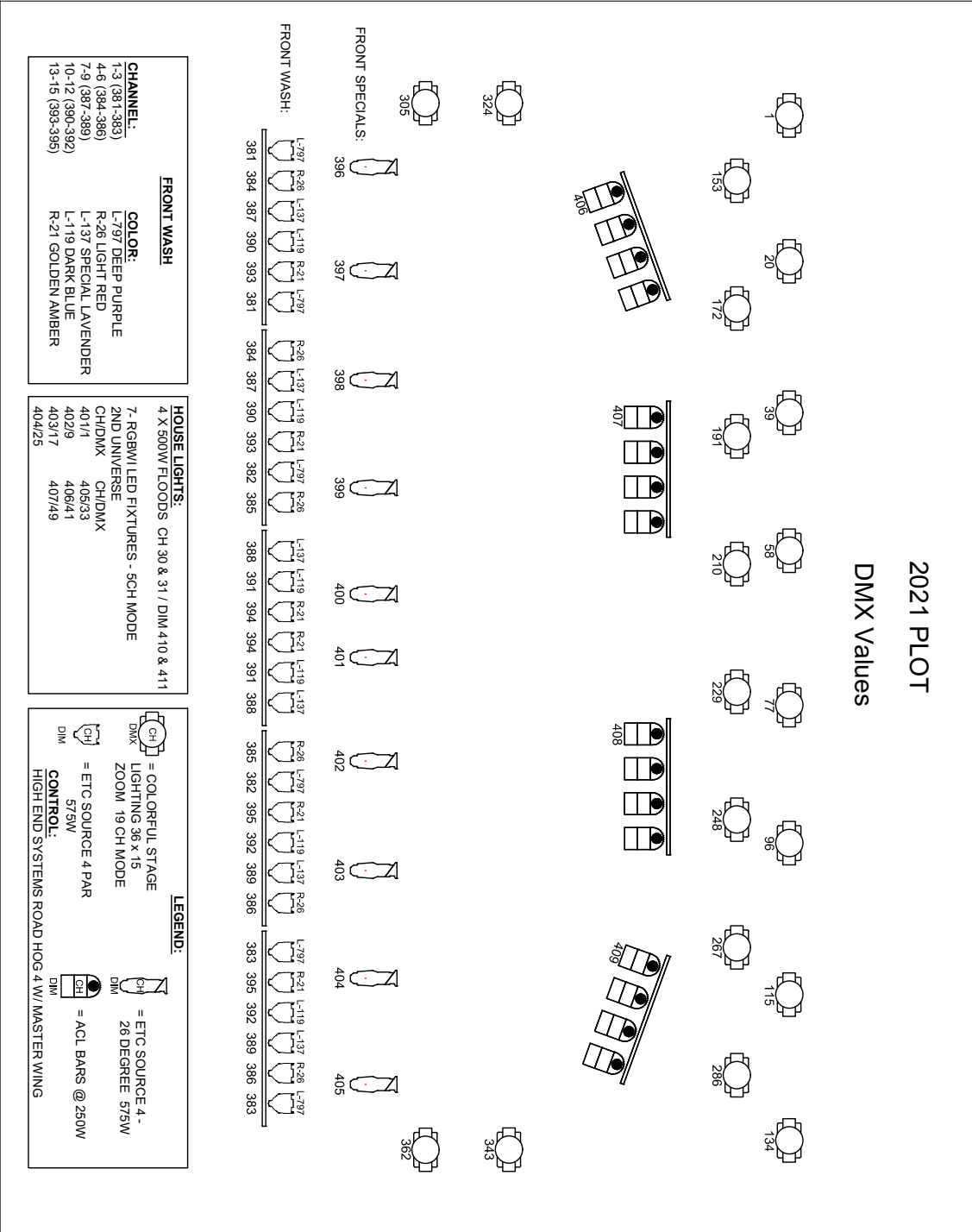
### SNAKE

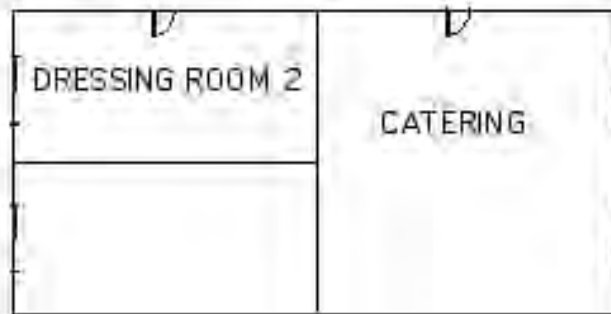
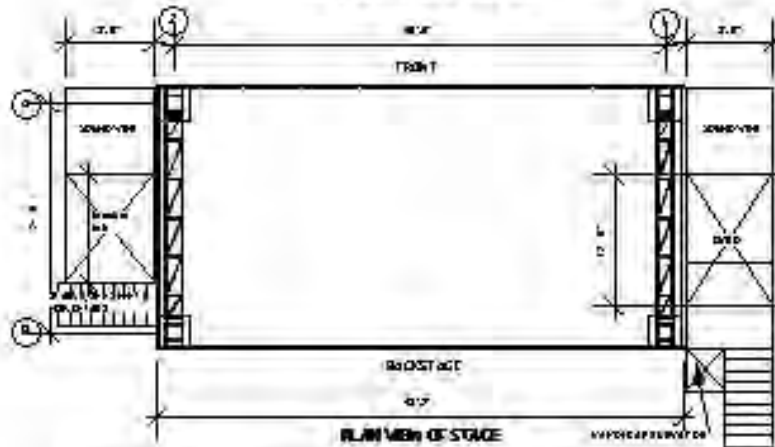
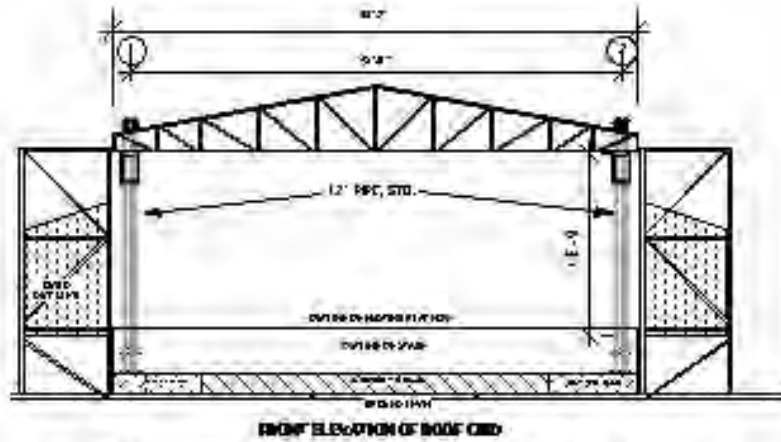
1 – 54 channel input snake with monitor split

Contact Info: Sound Image Attn. Rick Stanley rstanley@sound-image.com  
Phone: 760-737-3900 / Fax: 760-737-3929

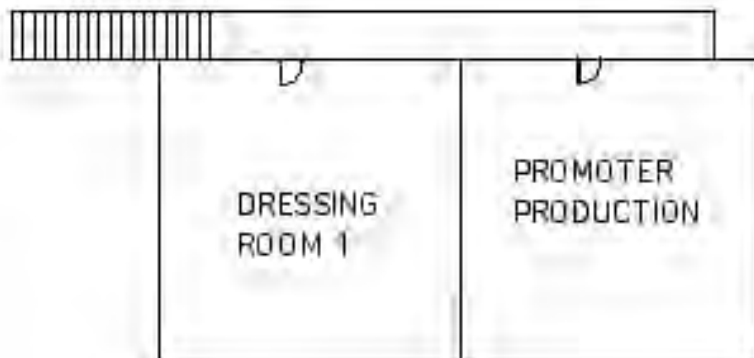
# HUMPHREYS LIGHTING PLOT 2021

## 2021 PLOT DMX Values





Down Stairs



Up Stairs

# Humphreys Stage View

